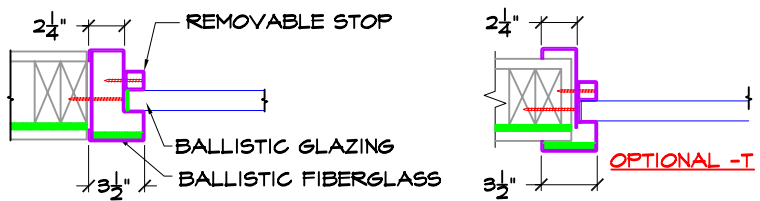


ISOMETRIC

NTS

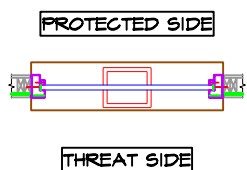
- NOTES:
- 1 12 GAUGE STEEL C-SHAPE BALLISTIC CAPTURE FRAME W/ POWDER COAT FINISH
 - 2 16 GAUGE STAINLESS STEEL DEAL TRAY
 - 3 CLEAR BULLET RESISTANT MATERIALS SPECIFY UL 752 LVLS I THRU III
 - 4 NATURAL VOICE PORT FOR SOUND TRANSMISSION INCLUDES BACK PLATE THAT OVERLAPS MIN OF 2"
 - 5 BALLISTIC LINED COUNTER TOP MADE OF PLASTIC LAMINATE W/ PHENOLIC BACKING MULTIPLE COLORS (STAINLESS STEEL COUNTER ALSO AVAILABLE UPON REQUEST)
 - 6 MOUNTING HOLES ON PROTECTED SIDE OF THE FRAME FOR ADDED SECURITY



A STEEL WINDOW JAMB

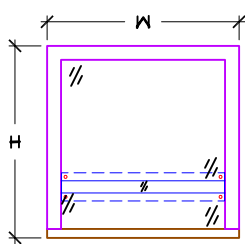
SIM @ HEAD

NTS



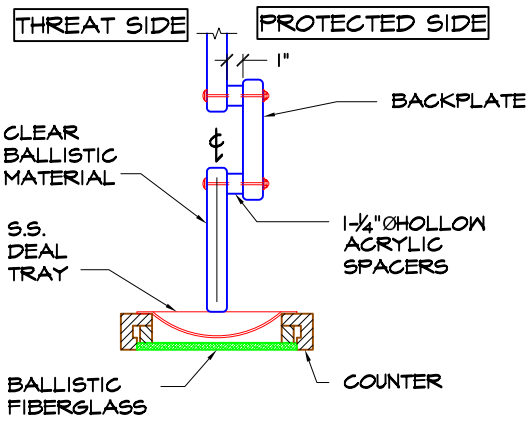
PLAN

NTS



ELEVATION

REQUIRED FINISH OPENING = NTS
 WIDTH - 3-3/4"
 HEIGHT - 1-7/8"



B SECTION @ DEAL TRAY

NTS

TW AVP-ST-C (TW= TRANSACTION WINDOW, A= TYPE OF VOICE PORT, ST= FRAME MATERIAL, C= FRAME TYPE)

(ADDITIONAL OPTIONS REPLACE AS NECESSARY)
 FRAME MATERIAL OPTIONS- ST= STEEL, SS= STAINLESS STEEL
 FRAME TYPE OPTIONS- C= C-SHAPE, T= TELESCOPING

TRANSACTION WINDOW WITH HORIZONTAL VOICE PORT. SPECIFY LEVEL OF PROTECTION. SIZES AVAILABLE UP TO 8'W x 5'h.



MODEL # TWHVP-ST
 BULLET RESISTANT TRANSACTION WINDOW
 WITH HORIZONTAL VOICEPORT

K:\DRAWINGS\WEB DRAWINGS\TWHVP-ST-C.dwg