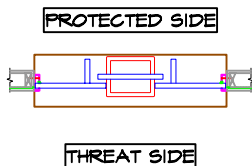


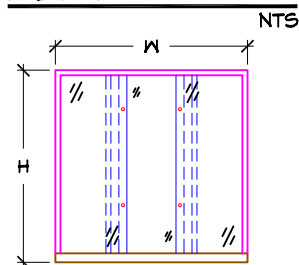
- NOTES:
- 1 ALUMINUM BALLISTIC CAPTURE FRAME W/ POWDER COAT FINISH
  - 2 16 GAUGE STAINLESS STEEL DEAL TRAY
  - 3 CLEAR BULLET RESISTANT MATERIALS SPECIFY UL 752 LVLS I THRU III (HIGHER LVLS AVAIL. IN GLASS CLAD POLY)
  - 4 NATURAL VOICE PORT FOR SOUND TRANSMISSION INCLUDES BACK PLATE THAT OVERLAPS MIN OF 2"
  - 5 BALLISTIC LINED COUNTER TOP MADE OF PLASTIC LAMINATE W/ PHENOLIC BACKING MULTIPLE COLORS (STAINLESS STEEL COUNTER ALSO AVAILABLE UPON REQUEST)
  - 6 MOUNTING HOLES ON PROTECTED SIDE OF THE FRAME FOR ADDED SECURITY

**ISOMETRIC**

NTS

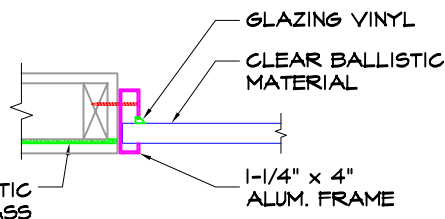


**PLAN**



**ELEVATION**

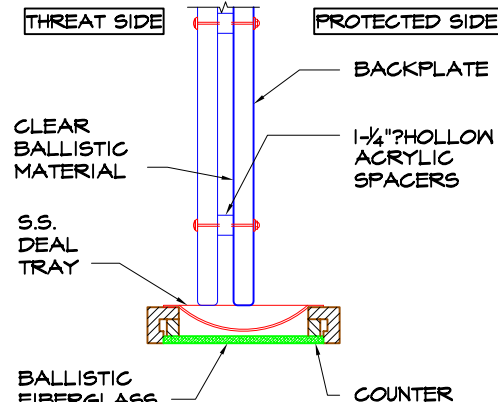
REQUIRED FINISH OPENING = NTS  
 WIDTH + 1/4"  
 HEIGHT + 1/8"



**A ALUMINUM JAMB**

SIM @ HEAD

NTS



**B SECTION @ DEAL TRAY**

NTS

TRANSACTION WINDOW WITH VERTICAL VOICE PORT. SPECIFY LEVEL OF PROTECTION. SIZES AVAILABLE UP TO 8'w x 5'h.



MODEL # TWVVP  
 BULLET RESISTANT TRANSACTION WINDOW  
 WITH VERTICAL VOICEPORT

K:\DRAWINGS\WEB DRAWINGS\TWVVP-1.dwg